

Quick Install Guide

XGS-1024 24-Port Gigabit Ethernet Switch



Use the XGS-1024 to:

- ▶ Expand Your Home or Office Network with 24-Ports (10/100/1000)
- ▶ Future Proof Your Network with Gigabit Speeds (10X Performance of Fast Ethernet)
- ▶ Create a VLAN for Optimizing VoIP, Video, Security, or Gaming Applications (requires XMS-1024)

24-PORT GIGABIT ETHERNET SWITCH

MODEL NUMBER: XGS-1024

Quick Install Guide

© 2011 Luxul. All Rights Reserved.

No part of this publication may be modified or adapted in any way, for any purposes without permission in writing from Luxul. The material in this manual is subject to change without notice. Luxul reserves the right to make changes to any product to improve reliability, function, or design. No license is granted, either expressly or by implication or otherwise under any Luxul intellectual property rights. An implied license only exists for equipment, circuits and subsystems contained in this or any Luxul product.

DOCUMENT CONVENTIONS

The following graphical alerts are used in this document to indicate notable situations:



NOTE: Tips, hints, or special requirements that you should take note of.



CAUTION: Care is required. Disregarding a caution can result in data loss or equipment malfunction.



WARNING! Indicates a condition or procedure that could result in personal injury or equipment damage.

CONTACT LUXUL

For sales questions
please contact our
Sales Department

P: (801) 822-5450

E: sales@luxul.com

If you experience any
problems, please contact
Technical Support

P: (801) 822-5450

E: support@luxul.com

PACKAGE CONTENTS

Please check the contents carefully after you open the packing:

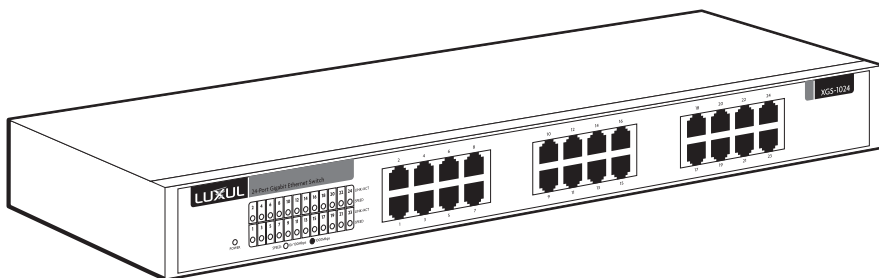
- ▶ One XGS-1024 24-Port Gigabit Ethernet switch
- ▶ Power Cord
- ▶ Two L-shaped rack mounting brackets and screws
- ▶ Four rubber pads
- ▶ Quick Installation Guide
- ▶ CD-ROM with User Documentation

If any of the listed items are missing or damaged, please contact the reseller from whom you purchased the XGS-1024 for return/replacement.

HARDWARE DESCRIPTION

Front Panel

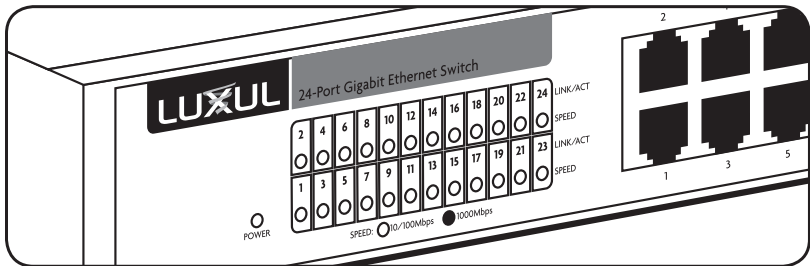
The front panel of the XGS-1024 includes 24 10/100/1000Mbps RJ45 ports on the right side and LED indicators on the left side. Each port has one Link/Activity LED and one 1000Mbps LED. There is also a power LED for indicating whether or not power is being applied to the XGS-1024.



XGS-1024 Front Panel View

LED Indicators

The LED indicators of the XGS-1024 include 1 Power indicator, 24 numbered Link/Activity indicators, and 24 1000Mbps indicators. These LED indicators show the operating status of the XGS-1024 and each switch connection.



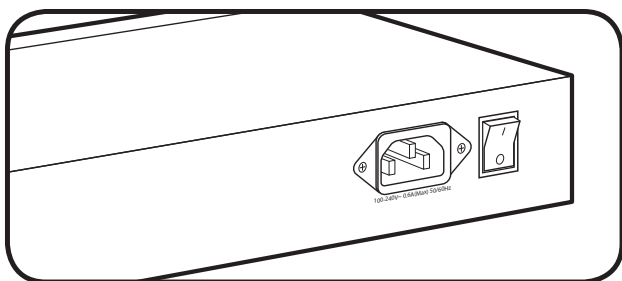
LED Indicators

The following chart shows the LED indicators of the XGS-1024 along with an explanation of the indicator's properties:

| LED | Status | Description |
|----------------|----------|--|
| Power | ON | This indicator lights up when the XGS-1024 is properly powered. |
| | OFF | If this indicator is not lit, please check the AC power cord to ensure proper connection to the outlet and the XGS-1024. |
| Link/ Activity | ON | Indicates a device is connected to the port of the XGS-1024. |
| | Blinking | Indicates the port is transmitting or receiving data. |
| | OFF | Indicates the port is not connected to a device. |
| 1000Mbps | ON | Indicates the XGS-1024 is connected to device at 1000Mbps. |
| | OFF | Indicates the device likely does not support 1000Mbps and is connected at something less than 1000Mbps. |

Rear Panel Layout

The rear panel has 1 AC power port and power switch.



XGS-1024 Rear Panel View



CAUTION: Please use the correct power cord for your environment. If any voltage other than 100/240 is applied, it will result in damage to the XGS-1024.

PREPARING FOR INSTALLATION

System Requirements

- ▶ **Network Connections:** Ethernet Enabled Computer
- ▶ **Web Browsers:** Internet Explorer 6.0 or higher, Mozilla 1.0 or higher, Safari 1.0 or higher
- ▶ **Internet:** Broadband Internet Service (depending on the service provider, a separate modem may be required)

Before Connecting to the Network

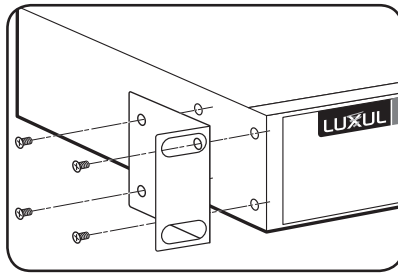
The XGS-1024 can be rack-mounted or used as a desktop switch. Before connecting to the network, please be aware of the following requirements:

- ▶ Install the XGS-1024 in a stable/safe place to avoid any possible damage
- ▶ Make sure there is adequate space around the XGS-1024 for adequate ventilation and proper heat dissipation.
- ▶ Do not place heavy articles on the XGS-1024.
- ▶ Power outlets should be within 5 feet of the XGS-1024.
- ▶ Check the power cord to confirm a secure connection.
- ▶ Ensure there is sufficient space around the XGS-1024 for proper ventilation and heat dissipation. It is recommended to have at least 4-6 inches around all sides.
- ▶ When installing the XGS-1024 on a surface, attach the rubber feet to the bottom of the device to avoid scratching the surface.

XGS-1024 INSTALLATION

Installing the XGS-1024 in a Rack

The XGS-1024 can easily be installed in a standard 19" rack. The XGS-1024 includes two mounting ears for installing and stabilizing the switch. For attaching the mounting ears and installing the switch within a rack, please refer to the following illustration:

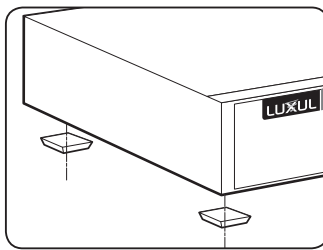


Rack-Mounting the XGS-1024

- ▶ Using the included screws, attach the mounting ears to each side of the switch.
- ▶ Mount the switch in the rack with the LEDs facing outwards. Be sure the switch is level and properly secured within the rack.

Desktop Setup

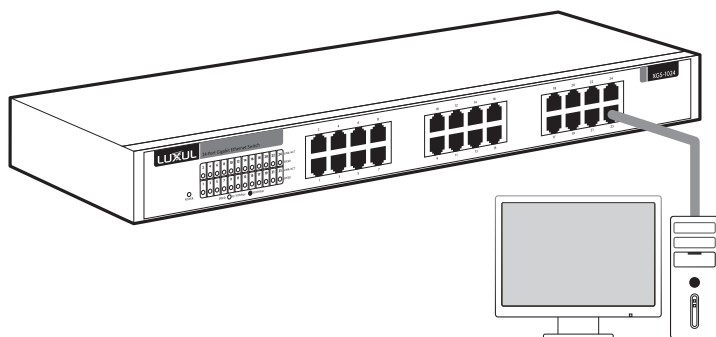
For use as a desktop device, position and apply the included rubber feet to the bottom of the XGS-1024.



Attaching the Rubber Feet to the XGS-1024

Connecting Devices

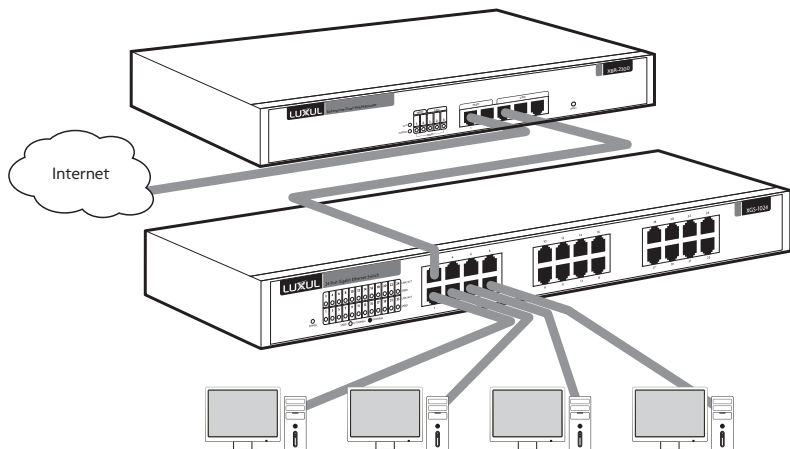
Use standard Ethernet CAT5, CAT5e, or CAT6 cable to connect the XGS-1024 to a device as described below (CAT6 must be used in order to achieve full Gigabit bandwidth). The XGS-1024 will automatically adjust to the characteristics (speed/duplex) of the device to which it is connected.



Connecting the XGS-1024 to a Device

When a device is properly connected, the Link/Activity LED for each port lights up green. Please refer to the LED Indicators section for indicator definitions and troubleshooting.

Connecting to a Router or Other Switch



Connecting the XGS-1024 to Router or Switch

When a device is properly connected, the Link/Activity LED for each port lights up green. Please refer to the LED Indicators section for indicator definitions and troubleshooting.

FCC Statement:

- ▶ This equipment has been tested and found to comply with the limits for a Class A digital device, pursuant to part 15 of the FCC Rules. These limits are designed to provide reasonable protection against harmful interference in a residential installation. This equipment uses and can radiate radio frequency energy, and if not installed and used in accordance with the instructions may cause harmful interference to radio communications. However, there is no guarantee that interference will not occur in a particular installation. If this equipment does cause harmful interference to radio or television reception, which can be determined by turning the equipment off and on, the user is encouraged to try to correct the interference by one or more of the following measures:
 - ▶ Reorient or relocate the receiving antenna.
 - ▶ Increase the separation between the equipment and receiver.
 - ▶ Connect the equipment into an outlet on a circuit different from that to which the receiver is connected.
 - ▶ Consult the dealer or an experienced radio/TV technician for help.

**Information on this document supersedes all previous versions.
Products and documents subject to change without notice.
Products may be discontinued without notice.**